

Services

Sealant Restoration - SOW section 2.1

1. Precast Joints

A. Weather Seals (2.1.1)

B. Non-Weather Seals (Alternate) (2.1.2)

2. Perimeter Joints

3. Wet Seals Where Needed

4. Parapet Joints (Alternate)

5. Building Base Joint (Slab-on-Grade)

A. At Designated Locations totaling 10% of entire building perimeter

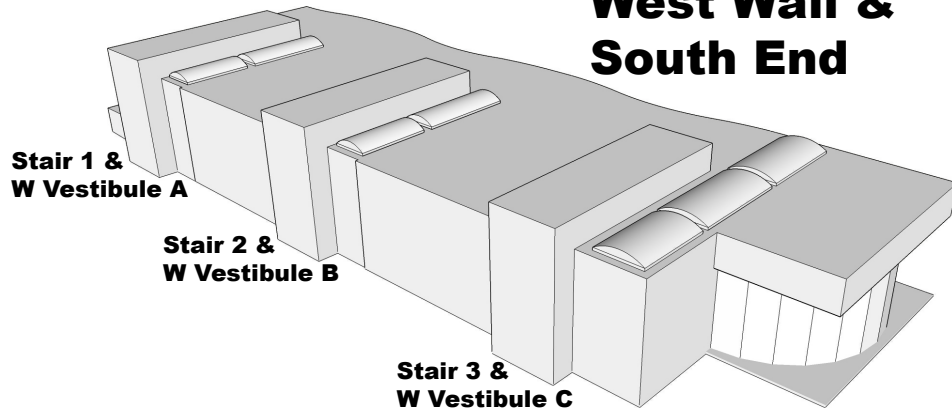
B. Everywhere (Alternate)

6. Skylight Sealant Restoration

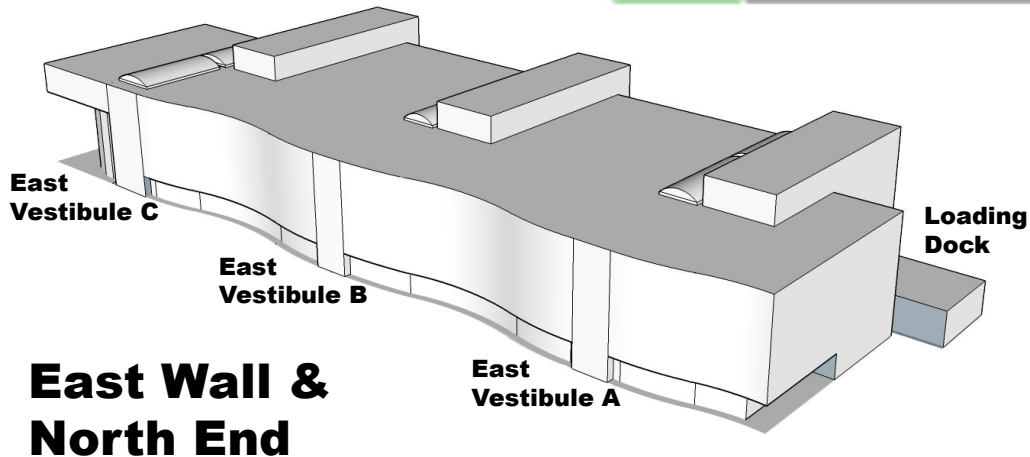
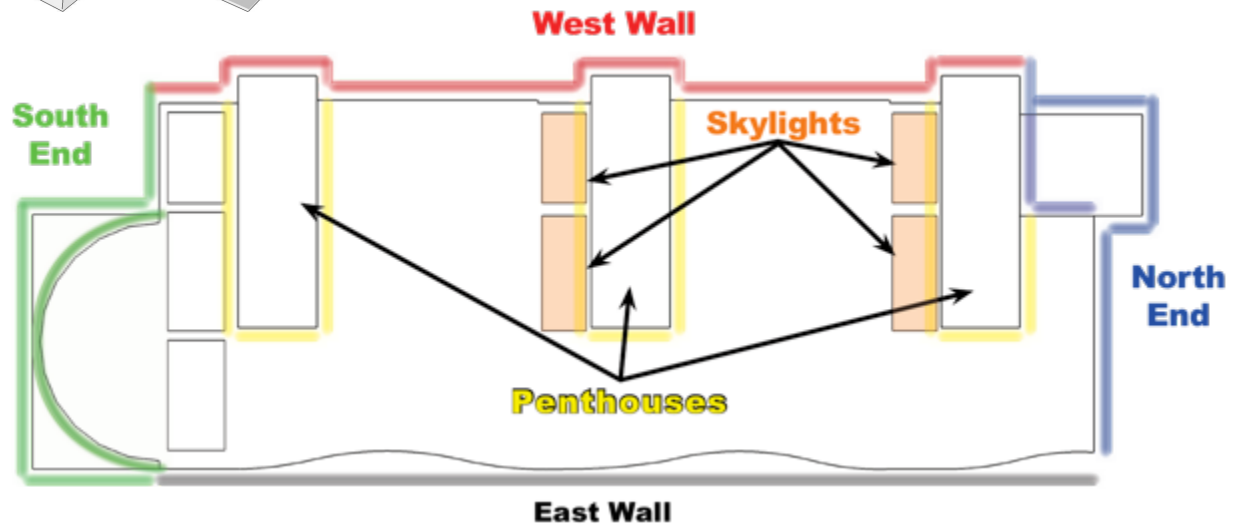
Services continued

6. Window Frame Restoration - SOW section 2.2
7. Sealing of New Vision Glass - SOW section 2.3
8. Pressure Washing - SOW section 2.4
9. Pre-cast Surface Waterproofing - SOW section 2.5

West Wall & South End



Work Areas & Nomenclature

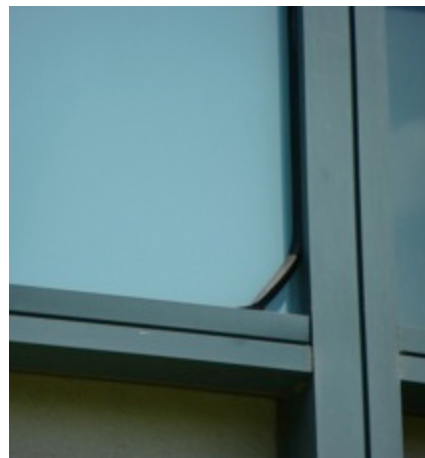




SOUTH END



GLAZING
GASKET IN
EXCELLENT
CONDITION
ADJACENT TO
ONE THAT
NEEDS TO BE
RESTORED



SPANDREL GASKET
OUT OF JOINT



MATERIAL LEACHED
FROM PRE-CAST ON
TO FRAME



WEST WALL



THE GLASS IN ALL BUT ONE OF
THE 106" X 82" WINDOWS IN
THIS WALL ARE TO BE SEALED

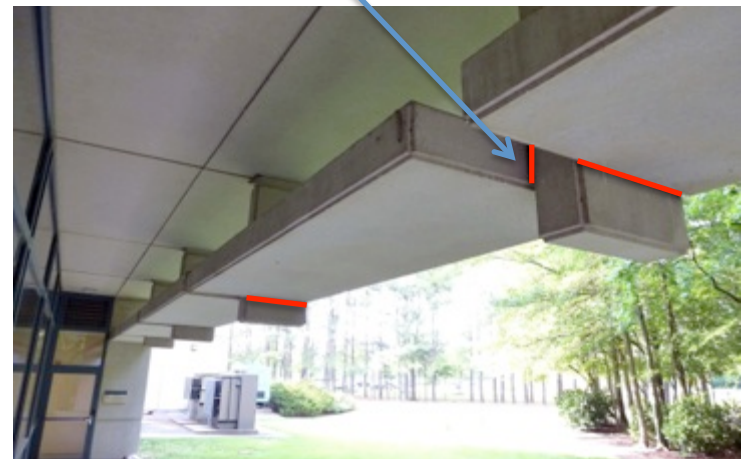


**NORTH
END**



LOADING DOCK

**"EXTERIOR" PRE-CAST JOINTS
(SOW SECTION 2.1.2)**



EAST SIDE

VESTIBULE C – EAST & WEST
SIDE VESTIBULE FRAMES ARE TO BE
RESTORED AND SEALED



THESE FEATURES SHADE THE EAST SIDE AND PREVENT
WATER FROM REACHING THE GLASS. MOST OF THESE
GLAZING GASKETS ARE WELL PRESERVED

EAST SIDE





NEW SEALS



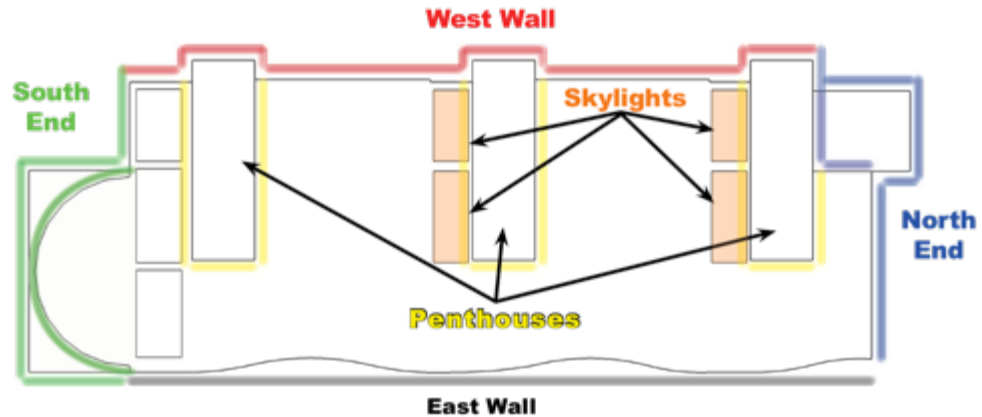
PRE-FORMED SILICONE EXTRUSION

NEW SEALS



SEALANT IN 4 SKYLIGHTS TO BE RESTORED PER SECTION 2.6

PENTHOUSE SEALANT JTS ARE TO BE RESTORED AND THE SURFACES CLEANED AND WATERPROOFED



MATERIALS

1. Sealants are specified in the Joint Sealant Specification
2. Materials for following tasks are suggested, not specified:
 - A. Window Frame Cleaning:
 1. EcoChem, Inc. OneRestore
 2. Presto Restoration Products, Inc. EnviRestore
 - B. Window Frame Sealing
 1. Presto Restoration Products. Inc. Metal Protector MD
 - C. Sealing Vision Glass
 1. Presto Restoration Products, Inc. “Glass Defender HD”
3. The waterproofing material is to be BASF Hydrozo 100

Any questions or concerns about the “Joint Sealant Restoration Specification” – Addendum 2 of the SOW?

Any questions about the the bid form, Section 4 of the SOW

Addendum 1 – “Hentz Engineering Drawings are the means of identifying the pre-cast joints but they may not include all the pre-cast joints to be restored